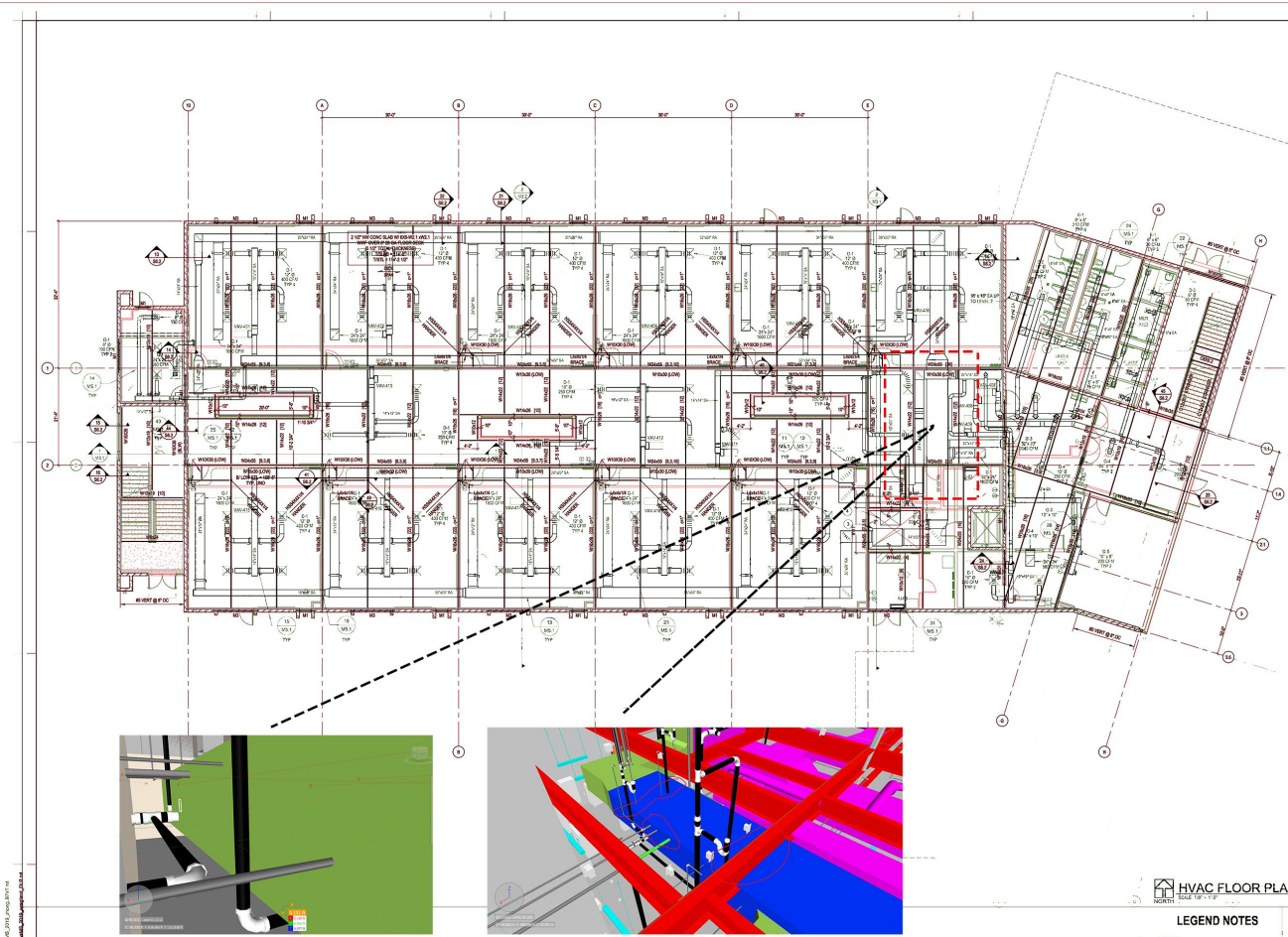




Madison Meadows Phase2 Clash Report 5/12/2020



FLOOR FRAMING PLAN NOTES

1. SEE CONCRETE DETAILS, SEE SCHEDULE PER 2015 IBC 1905 FOR FACE FINISHES.
2. SEE 11.01 FOR CEILING AND PARTITIONING.
3. SEE 11.01 FOR TRUCK CURB WALL, BENTUPPING AND CURB.

Wedge-Hall-
Westlake
Lealosky
Lealosky

HDR Group
DRK Group
Architect

Not for
Construction

Madison Meadows Middle School-Phase 2
Madison-Meadows Middle School - Phase 2
Madison School District 608
2015.06.08
Phase 2/2015

90%
CONSTRUCTION
DOCUMENTS
11/17/2015
REVISED 1/2016
REVISED

15-11-00-0000-00
HVAC/MECH/FRAMING
PLAN/MECH/AREA A
AREA A

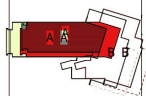
MS1&A

HVAC FLOOR PLAN, LEVEL 1 - AREA A
SCALE: 1/8" = 1'-0"

LEGEND NOTES

1. 12" x 12"
2. 8" x 8"
3. 4" x 4" INSIDE CORNER
4. 8" x 8" TYP FROM FLOOR

KEY PLAN

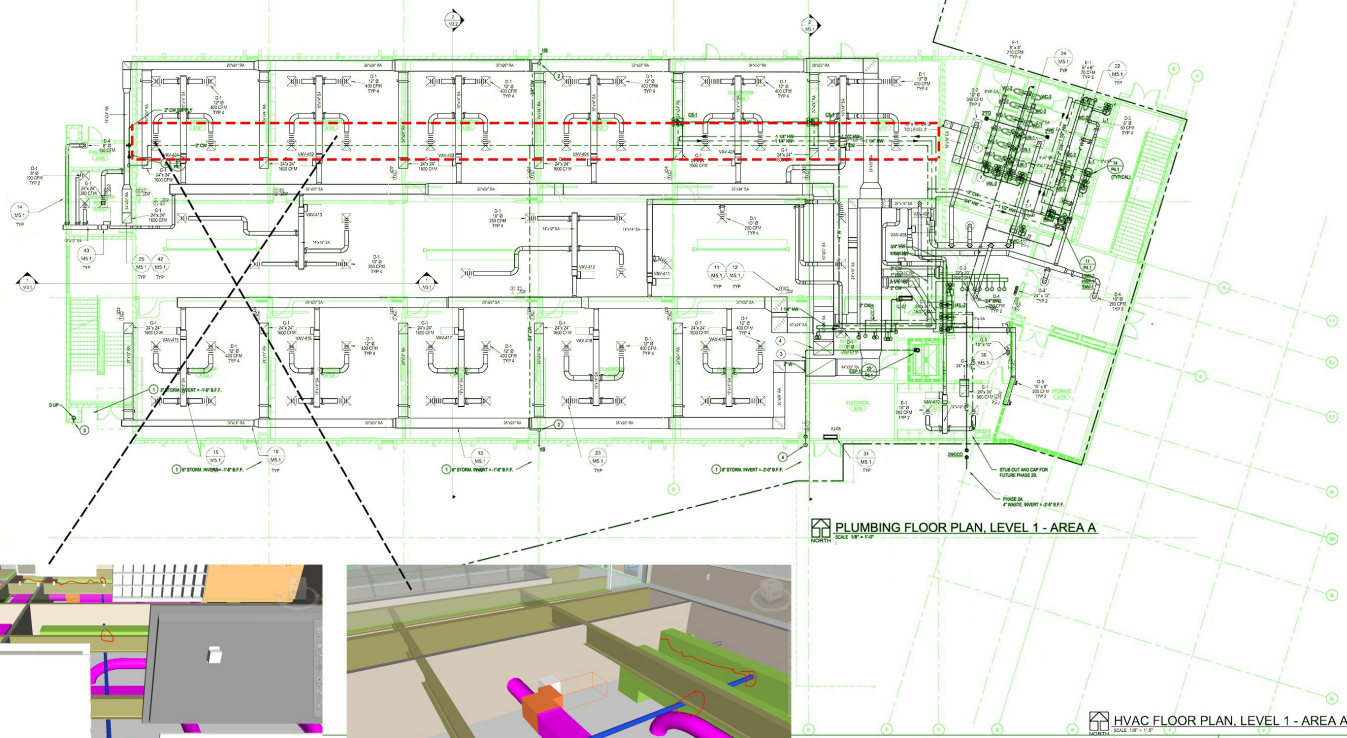


2ND FLOOR FRAMING PLAN - AREA A
SCALE: 1/8" = 1'-0"

Return duct clashing with multiple pipes and the 2nd floor's framing, can't move it any where. Less than 1" between the duct and a vertical pipe. Heavy coordination needed.

C:\Users\jlealos\Documents\15-11-00-0000-00_Plan\15-11-00-0000-00_Plan_0215.dwg
15-11-00-0000-00_Plan_0215.dwg
15-11-00-0000-00_Plan_0215.dwg
15-11-00-0000-00_Plan_0215.dwg

Domestic water pipe going through multiple ducts, moving it down requires re-routing of most of the duct work



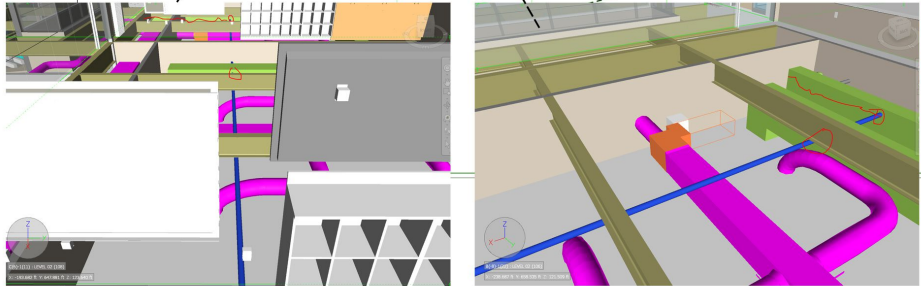
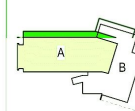
PLUMBING FLOOR PLAN, LEVEL 1 - AREA A
SCALE 1/8" = 1'-0"

HVAC FLOOR PLAN, LEVEL 1 - AREA A
SCALE 1/8" = 1'-0"

LEGEND NOTES

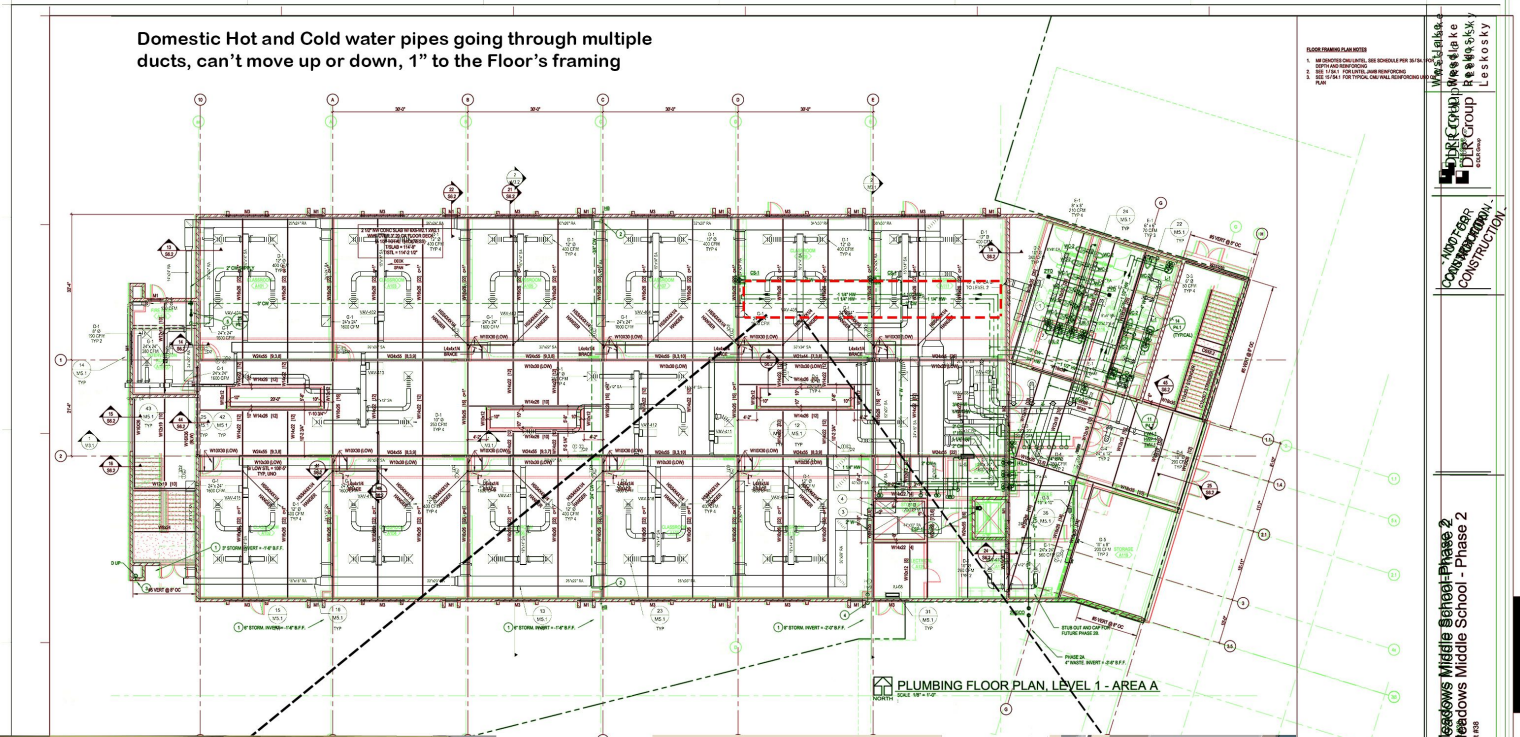
1. SEE CIVIL DRAWINGS FOR CONDUIT
2. SEE MECHANICAL DRAWINGS FOR DUCTS
3. SEE ELECTRICAL DRAWINGS FOR CONDUIT
4. SEE STRUCTURAL DRAWINGS FOR CONCRETE
5. SEE MECHANICAL DRAWINGS FOR DUCTS
6. SEE ELECTRICAL DRAWINGS FOR CONDUIT
7. SEE MECHANICAL DRAWINGS FOR DUCTS
8. SEE ELECTRICAL DRAWINGS FOR CONDUIT

KEY PLAN



30-18180-00
 HVAC FLOOR PLAN, LEVEL 1 - AREA A
 M1.1A
 Madison Meadows Middle School Phase 2
 Madison Meadows Middle School
 12770 County Rd.
 Madison, WI 53717
 608.261.1234
 www.madisonwi.gov
 11/18/2018

Domestic Hot and Cold water pipes going through multiple ducts, can't move up or down, 1" to the Floor's framing



FLOOR FINISH PLAN NOTES
 1. ALL FINISHES SHALL BE SHOWN PER SECTION 051000.00
 2. SEE SECTION 051000.00 FOR TYPICAL WALL REPAIRS
 3. SEE SECTION 051000.00 FOR TYPICAL DOOR REPAIRS

Wisconsin
 State
 Capital
 Group
 LLC
 a
 subsidiary
 of
 Leidos
 Inc.

MP-12A
 Construction
 Group

Madison Meadows Middle School - Phase 2
 Madison Meadows Middle School - Phase 2
 Jefferson School District #188
 2025-2026

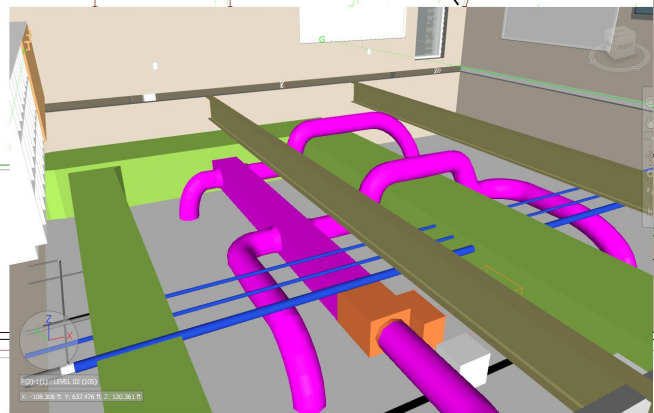
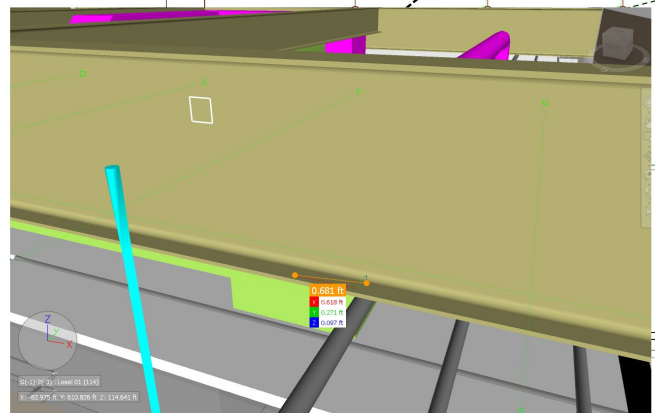
50%
 CONSTRUCTION
 DOCUMENTS

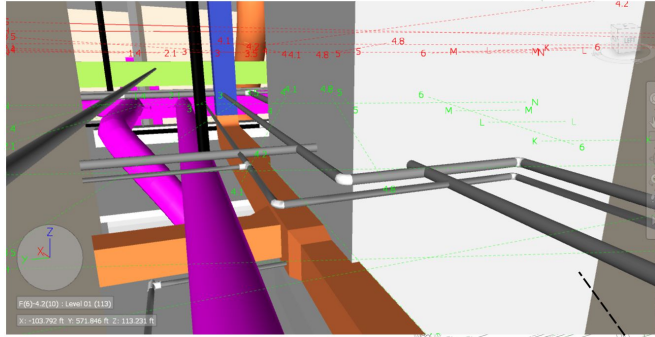
LEVEL 1 - AREA A

KEY PLAN

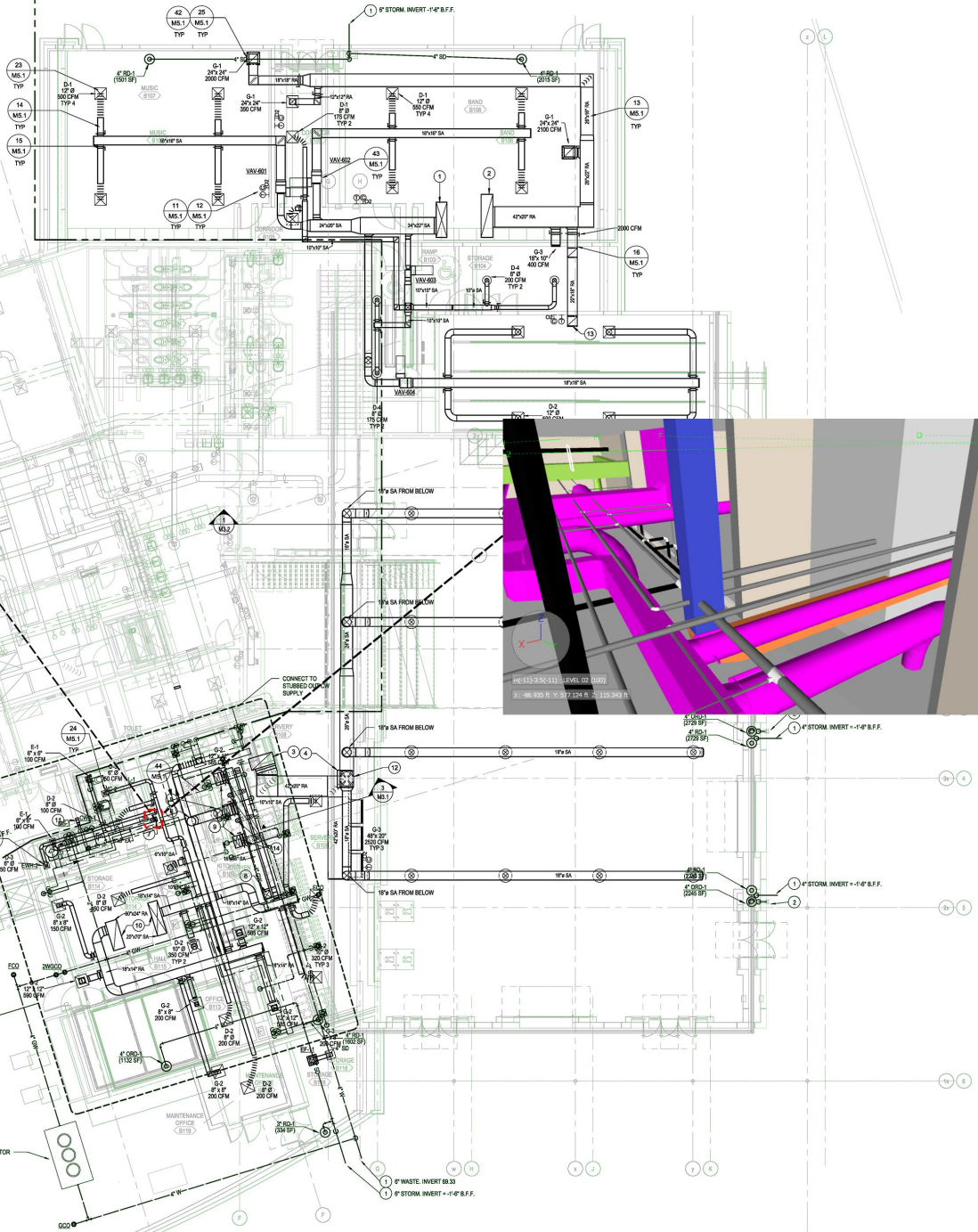


MP-12A

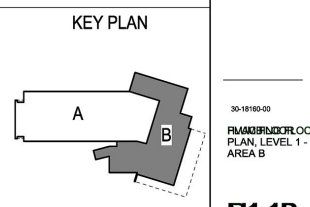
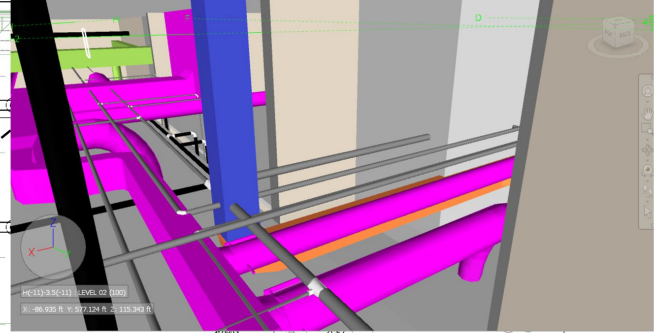




Vertical duct clashing with multiple pipes.



- ### LEGEND NOTES
- SEE SHEET FROM PREVIOUS DRAWING.
 - CHECK ON LEAKS TO DISCHARGE THROUGH DOWNSPOUT 12 ABOVE.
 - 3/4" DIA. UP BACK TO RTU-06.
 - 3/4" DIA. UP BACK TO RTU-07.
 - 3/4" DIA. UP FROM RTU-07.
 - 1/2" DIA. SA CONNECTION TO FOOD SERVICE EXHAUST HOOD.
 - UP THROUGH ROOF TO KITCHEN HOOD EXHAUST FAN (EF-08).
 - UP THROUGH ROOF TO GENERAL EXHAUST FAN (EF-05).
 - UP THROUGH ROOF TO MAKEUP AIR UNIT (MAU-04).
 - REFRIGERANT PIPING UP TO LEVEL 2.
 - UP THROUGH ROOF TO ROOFTOP UNIT (RTU-06).
 - OVER EXHAUST VENT, CONNECT FROM CLOTHES DRYER TO THROUGH WALL VENT CAP WITH INTEGRAL BACKDRAFT DAMPER.
 - 3/4" DIA. FROM ROOF EXTERIOR EXPOSED DUCT, TURNED UP INTO ENCLOSURE AND TRANSITION TO 2" DIA. SA.
 - ELBOW TURNED UP WITH OPEN ENDED DUCT FOR RETURN AIR.
 - 1/2" DIA. SA CONNECTION TO FOOD SERVICE AC CONNECTION. PROVIDE MANUAL VOLUME DAMPER IN EACH BRANCH CONNECTION AND BALANCE TO 25 CFM (EA) (TYP).



NOT FOR CONSTRUCTION

GMP SET
11.01.2019
Revision

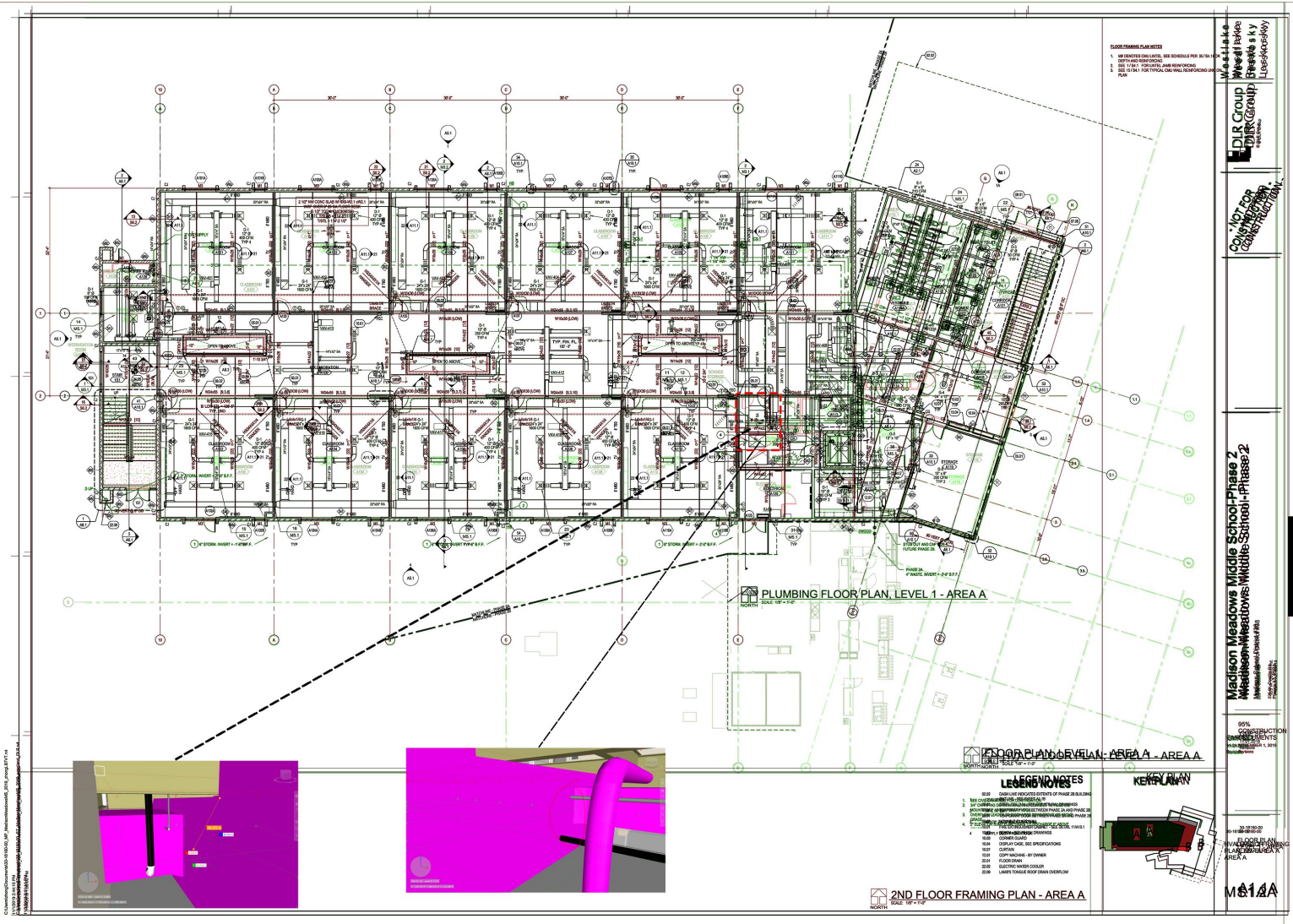
30-18160-00
PLUMBING FLOOR PLAN, LEVEL 1 - AREA B

M1.1B

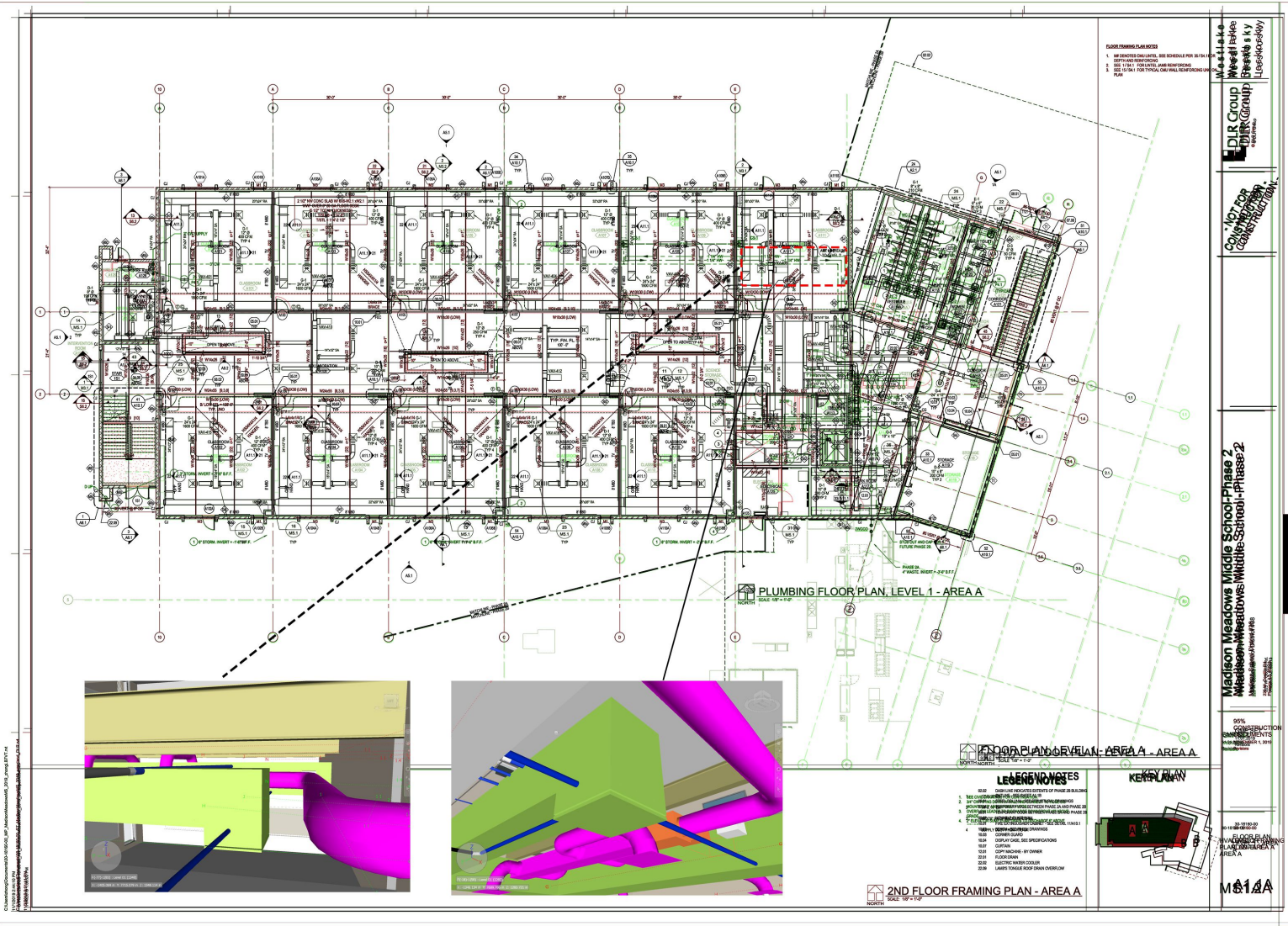
C:\Users\jgibson\OneDrive\Documents\30-18160-00\30-18160-00-PLUMBING\30-18160-00-PLUMBING-FLOOR PLAN, LEVEL 1 - AREA B.dwg
11/20/19 10:48:04 AM



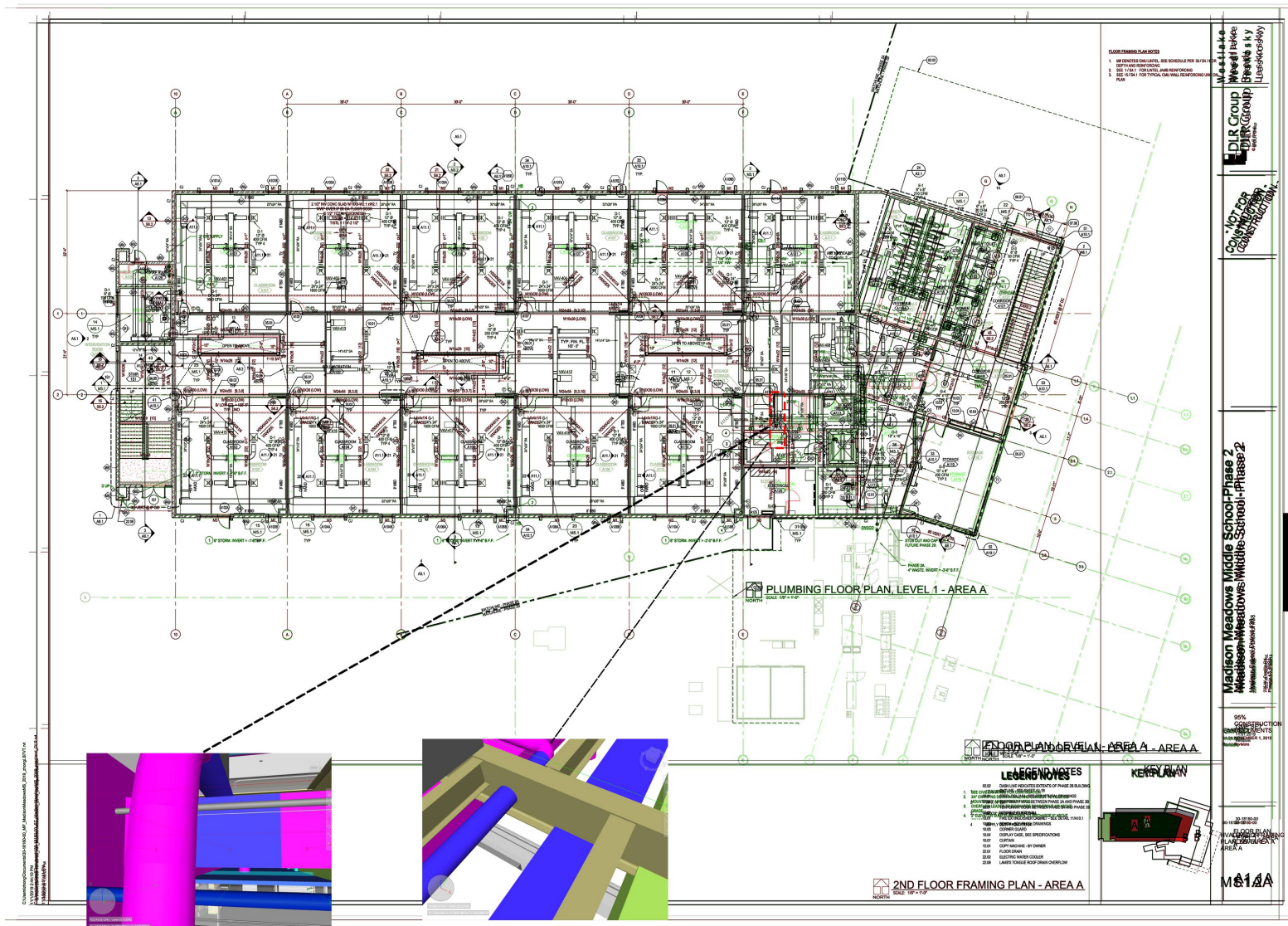
55X24 duct clashing with the framing and multiple vertical and horizontal pipes, not enough space to move it anywhere.



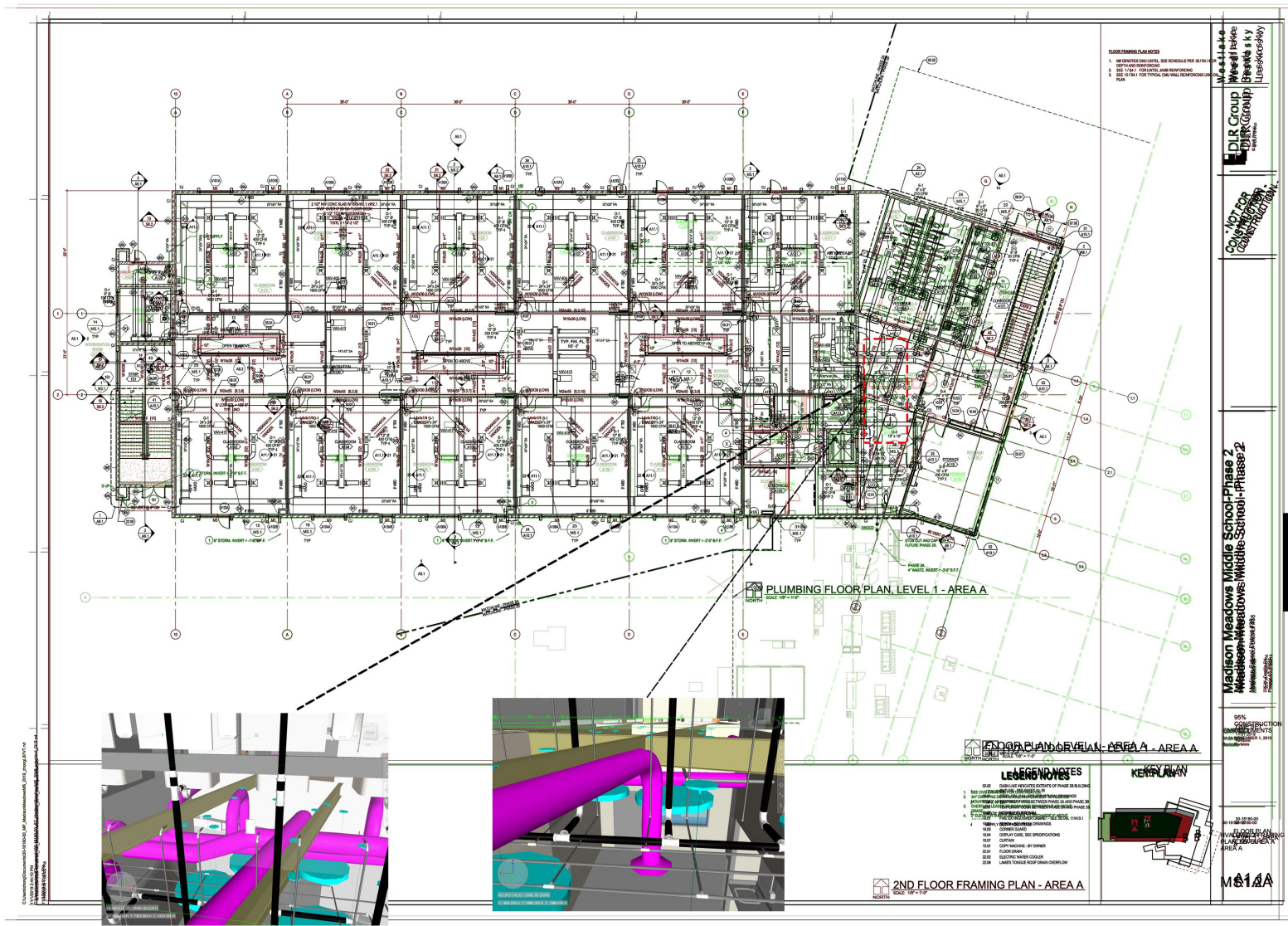
52X36 duct clashing with multiple domestic and sanitary pipes, not enough space to move it anywhere distance to the ceiling is 7".



Vertical duct clashing with multiple domestic pipes, not enough space to move it anywhere distance to the floor's Framing is 9".



Multiple ducts clashing with the framing of the second floor and drain pipe, re-routing them will create more clashes with the ceiling and other pipes, heavy coordination needed



FLOOR FRAMING PLAN NOTES

1. SEE DETAILS ON WALLS, SEE SCHEDULE FOR DOOR & WINDOW SCHEDULES
2. SEE 1/4\"/>

Wesite
Presente s & y
Lieskoski

EDJR Group
Architect Group
1000
1000

NOT FOR
CONSTRUCTION

Madison Meadows Middle School-Phase 2
Madison-Meadows-Whittle-School-Phase 2
Madison-Meadows-Whittle-School-Phase 2
Madison-Meadows-Whittle-School-Phase 2

90%
CONSTRUCTION
SUBMITTALS
10/10/2018 1:04:00 PM

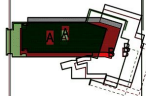
10/10/2018 10:22:02 AM
MADISON MEADOWS MIDDLE SCHOOL
PLUMBING FLOOR PLAN - AREA A
M&A

FLOOR PLAN LEVEL - AREA A - AREA A
SCALE: 1/4\"/>

LEGEND NOTES

1. SEE 2/4\"/>

KEY PLAN



2ND FLOOR FRAMING PLAN - AREA A
SCALE: 1/4\"/>

Multiple clashes between MEP and structure, Heavy coordination is needed.